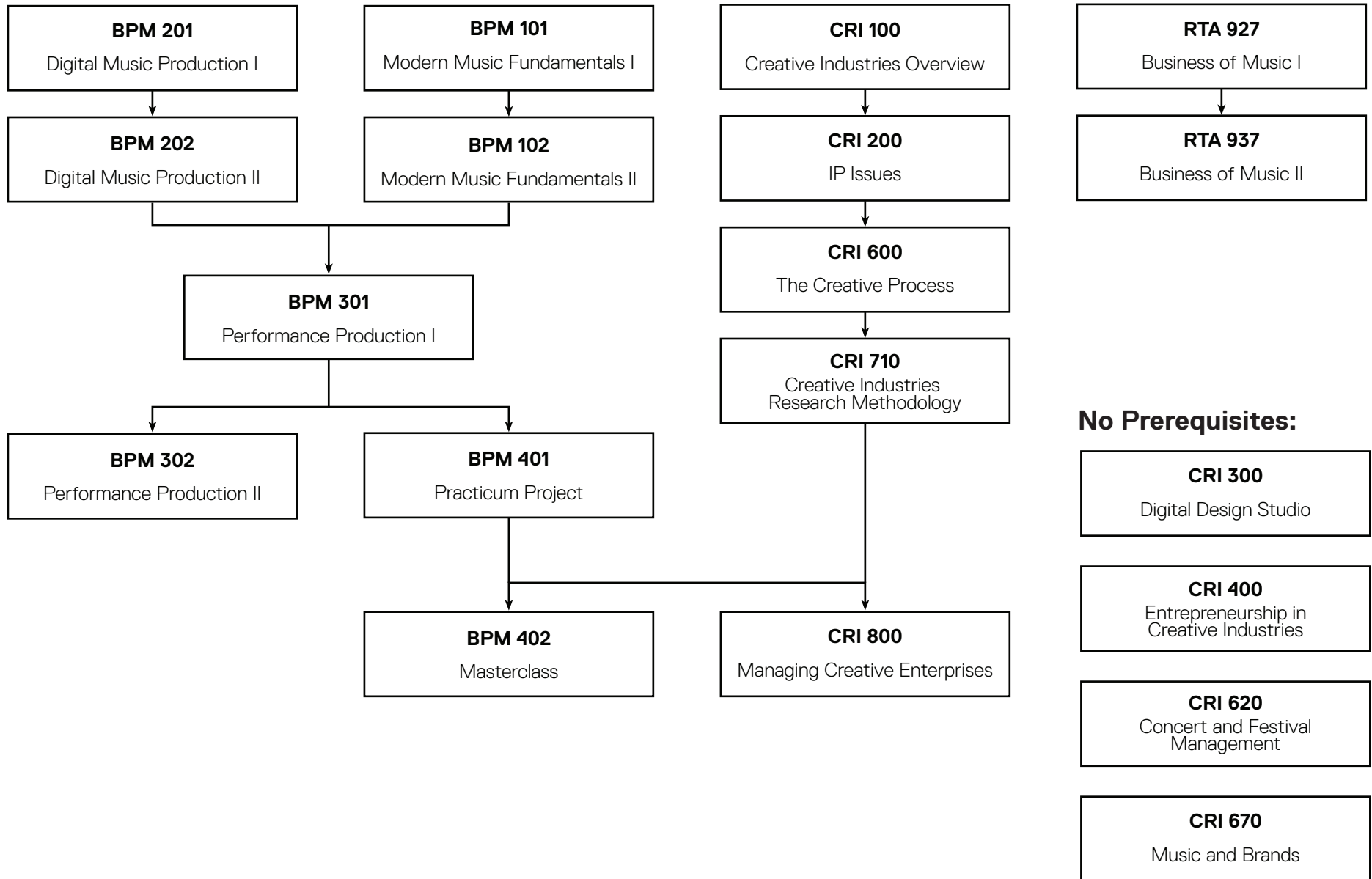


Program Overview & Prerequisite Charts

**Professional
Music**

at The Creative School

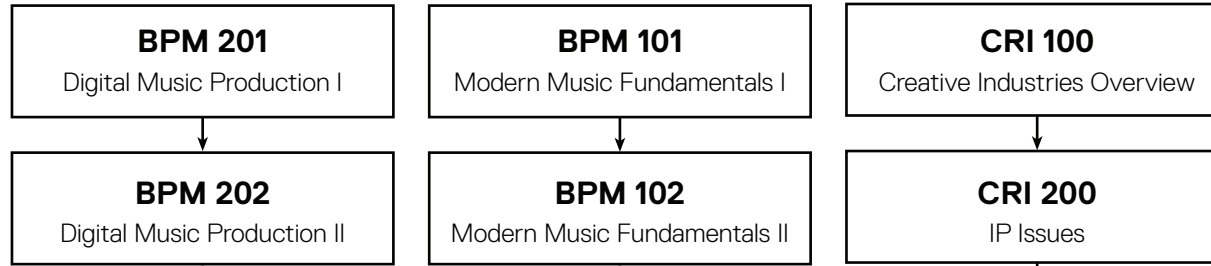
Core Courses Prerequisite Chart



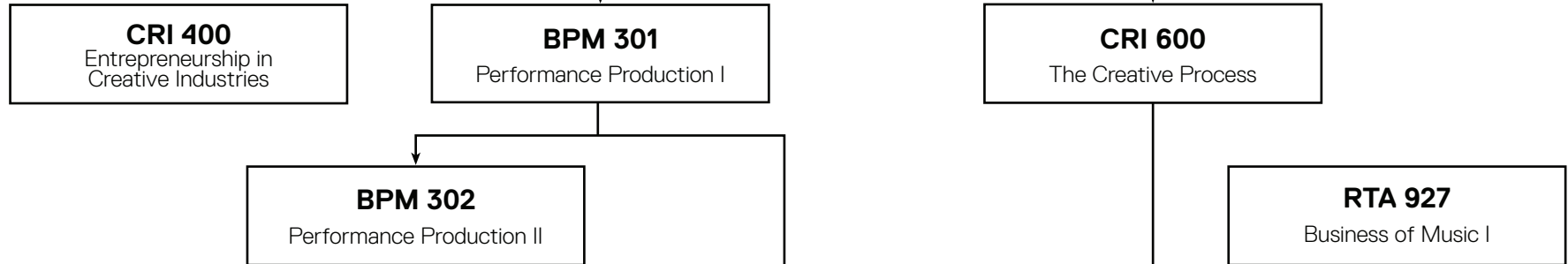
Professional Music

**Core Courses
Prerequisite Chart
By Year**

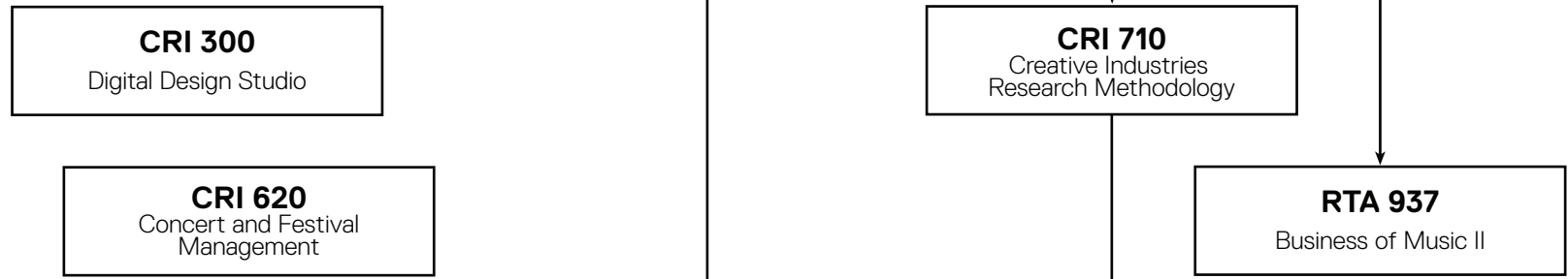
1st Year



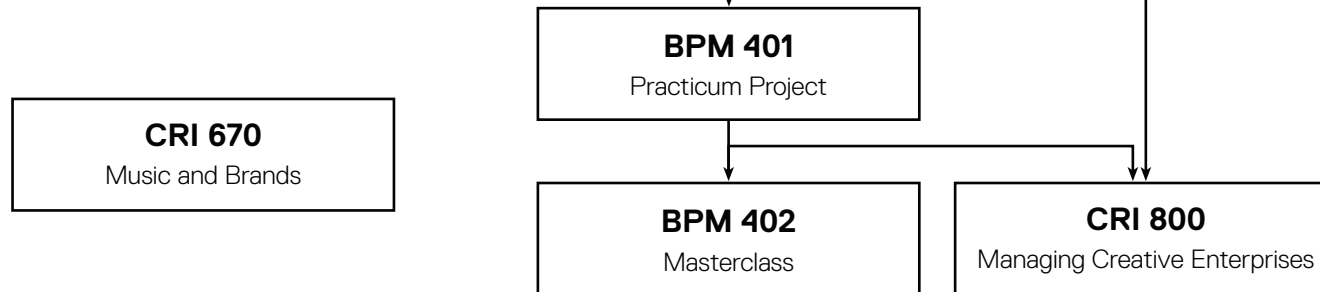
2nd Year



3rd Year



4th Year



Professional Music

Program Overview & Graduation Requirements

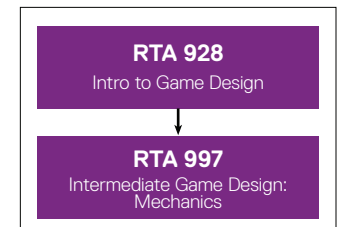
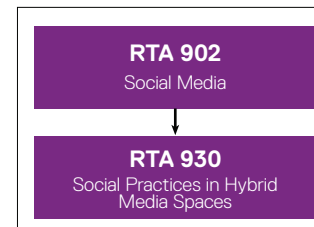
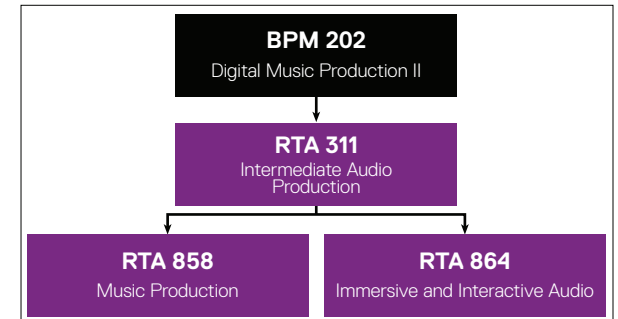
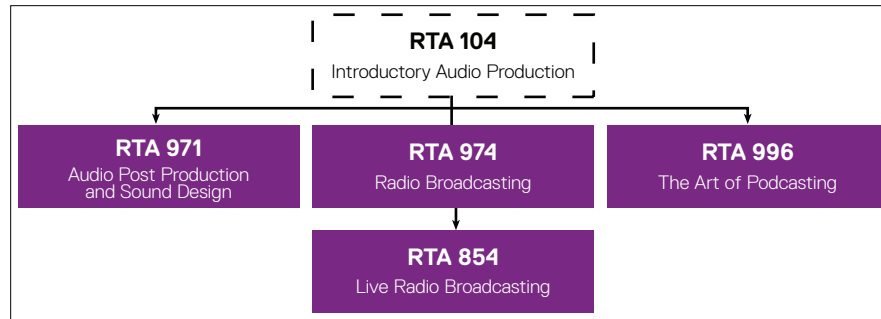
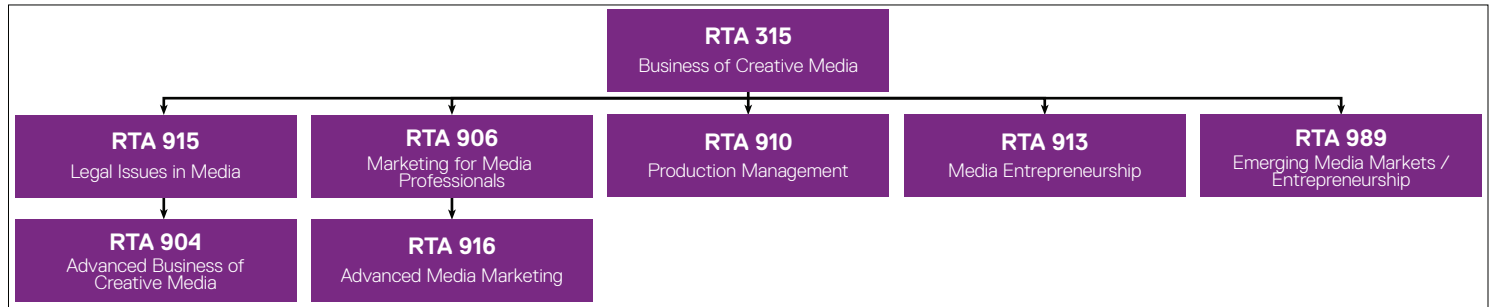
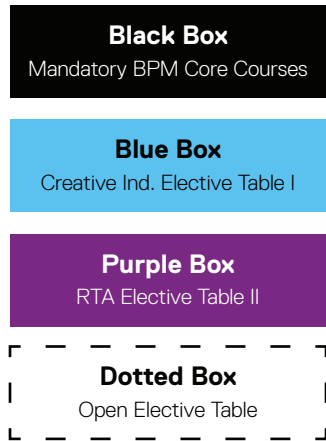
CORE COURSES	CORE ELECTIVES	LIBERAL STUDIES	OPEN ELECTIVES
<p>Semester 1</p> <p>BPM 101 Modern Music Fundamentals I</p> <p>BPM 201 Digital Music Production I</p> <p>CRI 100 Creative Industries Overview</p> <p>Semester 2</p> <p>BPM 102 Modern Music Fundamentals II</p> <p>BPM 202 Digital Music Production II</p> <p>CRI 200 IP Issues</p> <p>Semester 3</p> <p>BPM 301 Performance Production I</p> <p>CRI 600 Creative Process</p> <p>RTA 927 Business of Music I</p> <p>Semester 4</p> <p>BPM 302 Performance Production II</p> <p>CRI 400 Entrepreneurship in Creative Industries</p> <p>Semester 5</p> <p>CRI 300 Digital Design Studio</p> <p>CRI 710 Creative Ind. Methodologies</p> <p>Semester 6</p> <p>CRI 620 Concert & Festival Management</p> <p>RTA 937 Business of Music II</p> <p>Semester 7</p> <p>BPM 401 Practicum Project</p> <p>CRI 670 Music and Brands</p> <p>Semester 8</p> <p>BPM 402 Masterclass</p> <p>CRI 800 Managing Creative Enterprises</p>	<p>Students must take a total of 8 Core Electives, and 7 of them are required to come from certain tables:</p> <ul style="list-style-type: none"> ▶ 2 from RTA Table II ▶ 2 from Performance Table III ▶ 1 from Music Table IV ▶ 2 from Business Table V <div data-bbox="617 618 1052 808" style="border: 2px solid purple; padding: 5px; margin-bottom: 10px;"> <p>RTA Table II</p> </div> <div data-bbox="617 824 1052 1015" style="border: 2px solid orange; padding: 5px; margin-bottom: 10px;"> <p>Performance Table III</p> </div> <div data-bbox="617 1031 1052 1154" style="border: 2px solid pink; padding: 5px; margin-bottom: 10px;"> <p>Music Table IV</p> </div> <div data-bbox="617 1170 1052 1360" style="border: 2px solid green; padding: 5px; margin-bottom: 10px;"> <p>Business Table V</p> </div> <p>8th Core Elective</p> <p>Can be from Creative Industries Table I or from any of the 4 above tables as well</p> <div data-bbox="636 1466 1033 1524" style="border: 1px solid black; height: 36px; width: 189px;"></div>	<p>All students at TMU are required to take 6 liberal studies courses. Lower Liberals are meant to be taken in your earlier years, as Upper Liberals will often have higher expectations for students.</p> <p>Many of the Upper Liberals on Table B have prerequisites on Table A, so it can be worth planning ahead to see which Table B courses you may want to take in future years.</p> <div data-bbox="1110 724 1545 987" style="border: 2px solid blue; padding: 5px; margin-bottom: 10px;"> <p>Lower Liberals (Table A)</p> </div> <div data-bbox="1110 1036 1545 1299" style="border: 2px solid blue; padding: 5px;"> <p>Upper Liberals (Table B)</p> </div> <p>Upper Liberals can be substituted for Lower Liberals, but not vice versa. For example, you could take 2 Lower and 4 Upper Liberals and that would be fine, but you can't take 4 Lower and 2 Upper Liberals.</p>	<p>Open Electives are any course at TMU, aside from the following exceptions:</p> <ul style="list-style-type: none"> ▶ Lower Level Liberal Studies ▶ Courses graded on a pass/fail basis, such as orientations, work terms, some internships and practicums, etc. <p>You need departmental permission to use the following as an Open Elective:</p> <ul style="list-style-type: none"> ▶ Upper Level Liberal Studies ▶ Degree-level courses only offered by The Chang School <p>A course cannot be used to satisfy one of your 7 Open Electives AND satisfy a Core Elective at the same time.</p> <p>Open Elective courses can count towards a minor.</p> <p>Not all courses will be offered every semester and courses may be cancelled due to low enrolment.</p>

Professional Music

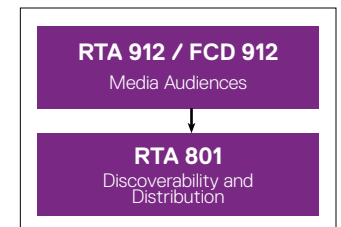
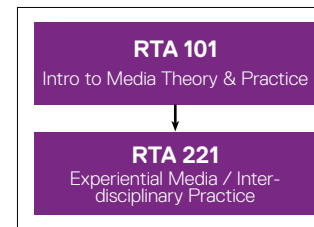
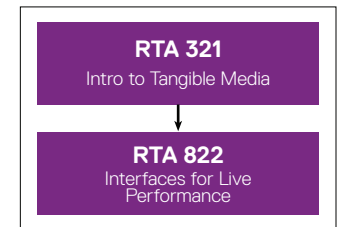
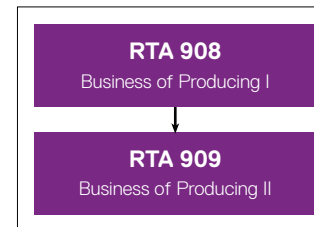
RTA Table II Prerequisite Chart

Legend:

The colours of the boxes correspond to the table or requirement that course belongs to



Courses with Complex Prerequisites	
<i>Too difficult to show visually in a chart</i>	
RTA 947 Advanced Live Event and Multi-Cam Production	RTA 320 or RTA 311 or RTA 312 or RTA 313 or RTA 314
RTA 953 Mobility and Mixed Reality	(RTA 222 or FCD 222) and (RTA 320 or RTA 865)
RTA 957 Documentary Production	RTA 311 or RTA 312 or RTA 313 or RTA 314 or RTA 234
RTA 960 International Media Co-Production	RTA 311 or RTA 313 or RTA 314 or RTA 312

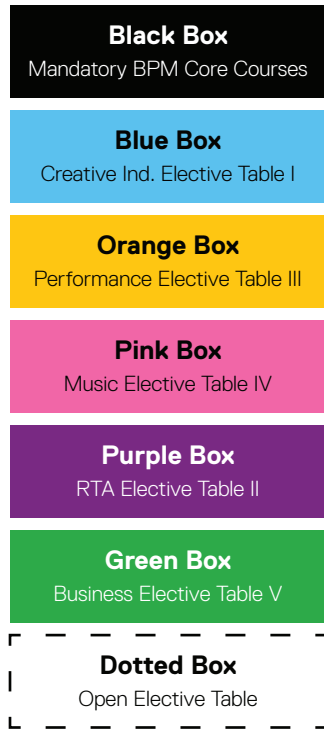


IMPORTANT: Many courses on RTA Table II are not shown here because they have no prereqs and are not prereqs for any other courses. This chart should NOT be used as a comprehensive list of all the courses on RTA Table II.

Professional Music Creative Industries Table I, Performance Table III, Music Table IV, & Business Table V Prerequisite Chart

Legend:

The colours of the boxes correspond to the table or requirement that course belongs to



IMPORTANT: Many courses on these elective tables are not shown here because they have no prereqs and are not prereqs for any other courses. This chart should NOT be used as a comprehensive list of all the courses on each table.

